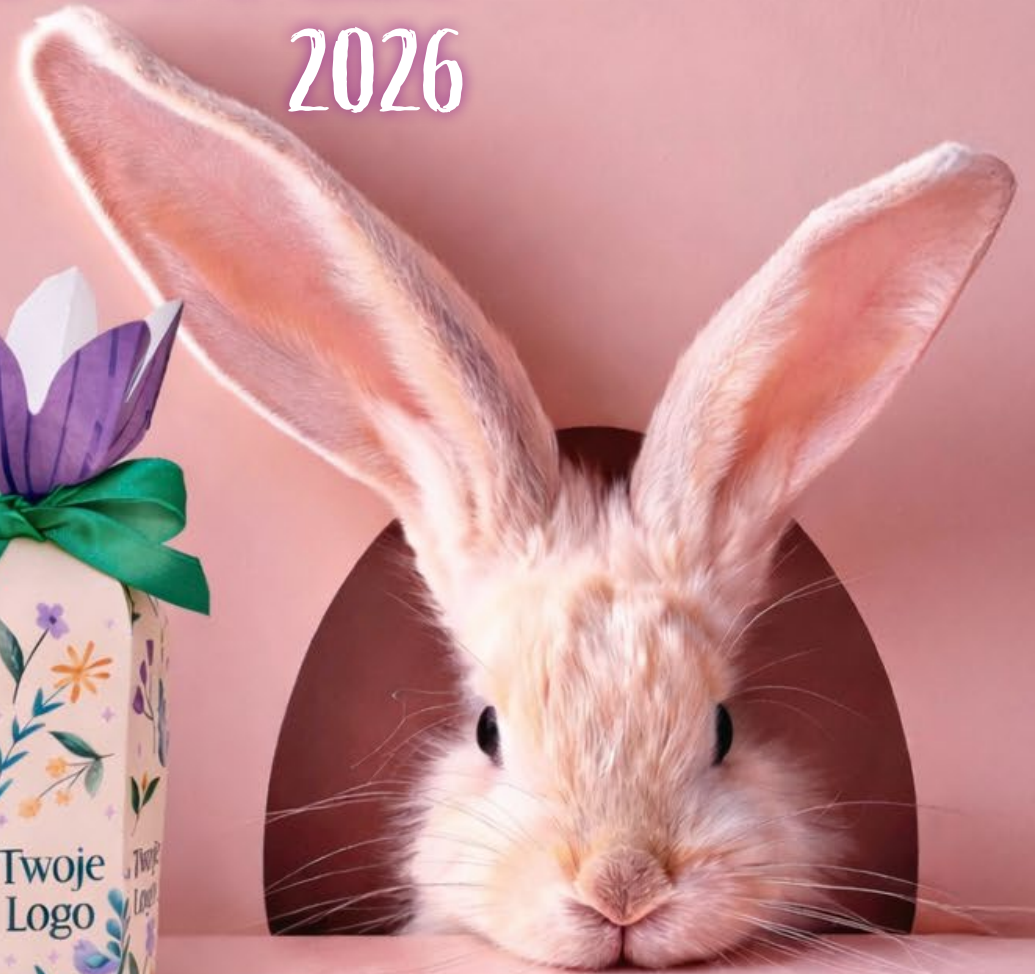


EASTER OFFER

2026



Promotional Sweets

Magic Choco 06.30



- Belgian chocolate 44% with an embedded white chocolate figurine of your choice:
 - teddy bear
 - Santa Claus
 - rocking horse
 - bunny
- chocolates packed in a transparent foil bag
- cardboard box with a window and full CMYK custom print

Net / gross weight: 52 /58 g

Chocolate dimensions: 59x89x13mm

Packaging dimensions: 97x65x13 mm

Minimum order quantity: 100 pcs.

Shelf life: 6 months



9 Pralines Chocolate Box 07.28

- 9 hand-made and decorated pralines with fillings in various flavors
- 3 selected praline flavors and decorations in standard
- pralines packed in black or white curlpapers
- two-piece cardboard box with window
- standard branding: gold or silver metallized cardboard without branding with cardboard tag with full colour promotional print (CMYK) on one side
- box with full colour promotional print – CMYK (available after inquiry)
- box tied with decorative bow in many colours (full list available after inquiry)

Net / gross weight: 113/167 g

Pralines per box: 9 pcs

Box size: 137x137x43 mm

Tag size: 59x56 mm

Minimum order quantity: 50 pcs

Shelf life: 4 months



Chocolate Egg with Fruits 20.34

- delicious egg made of high quality chocolate
- milk chocolate 44% cocoa with almonds and freeze-dried strawberry
- packed in transparent foil bag
- tied with decorative ribbon in several available colours
- tag with full colour promotional print (CMYK) on one side

Net / gross weight: ca.41/44 g
Tag size: 55x40 mm
Egg size: ca. 54x73x20 mm
Minimum order quantity: 100 pcs
Shelf life: 3 months



Easter Lollipop 20.37

- round chocolate lollipop with embossed white chocolate bunny and decorations
- 44% milk chocolate with white chocolate bunny
- wooden stick – length 80mm
- packed in transparent foil bag and tied with ribbon in several available colours
- tag with full colour promotional print (CMYK) on one side; tags without foil finishing

Net / gross weight: ca. 23/25 g

Tag size: 55x40 mm

Lollipop diameter: ca. 62 mm

Stick length: 80 mm

Minimum order quantity: 100 pcs

Shelf life: 6 months





Candy Flower 19.06

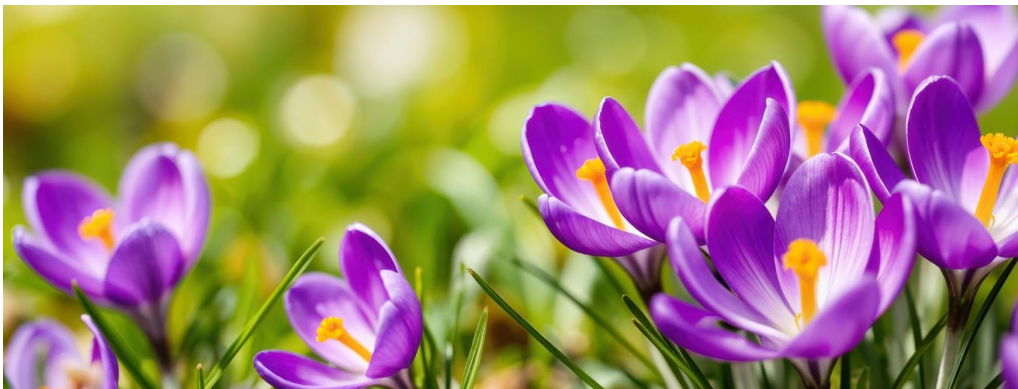
- elegant flower-shaped box containing delicious pralines
- 5 chocolate pralines wrapped in metallic foil
- pralines available in 6 different flavors and foil colors: truffle (navy blue foil), raspberry (pink foil), vanilla (gold foil), hazelnut (green foil), cherry (red foil) and caramel (orange foil)
- box with full colour CMYK promotional print
- tied with satin ribbon available in many colours

Net / gross weight: ca.78/82 g

Box size: bottom width: 53 mm
top width: 85 mm
height: 157 mm

Minimum order quantity: 100 pcs

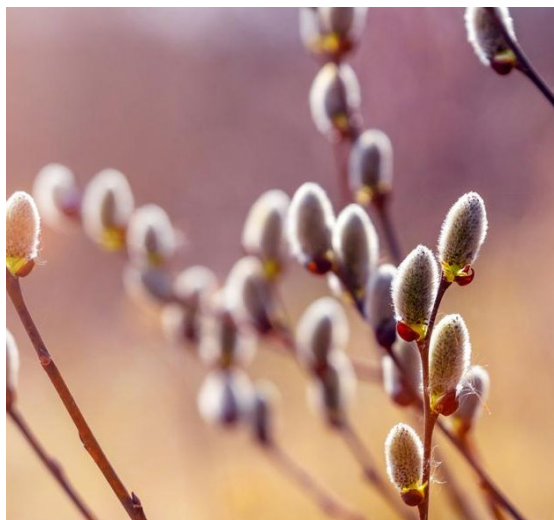
Shelf life: 6 months



Decorated Egg 20.22

- Easter egg made of high-quality chocolate with a handmade decoration in the shape of a willow catkins
- milk chocolate 44% cocoa with white chocolate
- black, gold or silver tray
- packed in transparent bag
- box with see-through window, showing the content of the box
- cardboard box with full colour promotional print – CMYK

Net / gross weight: ca. 85/110 g
Egg size: 122x90x10 mm
Box size: 160x135x20 mm
Minimum order quantity: 50 pcs
Shelf life: 6 months





4 Delicacies Cubes 07.19

- set of 2 white and 2 milk chocolates with embedded dried fruits and nuts, milk chocolate: 44% cocoa
- each chocolate contains a mix of peanuts, almonds, raisins, and dried cranberries
- chocolates placed on brown or white curlpapers packed in cardboard box with full colour promotional print – CMYK
- box with see-through window, showing the content of the box
- tied with satin ribbon available in many colours
- box made of gold or silver metallized cardboard with embossment after inquiry

<i>Net / gross weight:</i>	<i>56/80 g</i>
<i>Box size:</i>	<i>102x102x20 mm</i>
<i>Chocolates per box:</i>	<i>4 pcs</i>
<i>Minimum order quantity:</i>	<i>50 pcs</i>
<i>Shelf life:</i>	<i>3 months</i>



8 Delicacies Cubes 07.20

- set of 4 white and 4 milk chocolates with embedded dried fruits and nuts, milk chocolate: 44% cocoa
- each chocolate contains a mix of peanuts, almonds, raisins, and dried cranberries
- chocolates placed on brown or white curlpapers packed in cardboard box with full colour promotional print – CMYK
- box with see-through window, showing the content of the box
- tied with satin ribbon available in many colours
- box made of gold or silver metallized cardboard with embossment after inquiry

Net / gross weight: 112/140 g

Box size: 174x103x20 mm

Chocolates per box: 8 pcs

Minimum order quantity: 50 pcs

Shelf life: 3 months



Chocolate Tartlets Mini 04.26

- three handmade mini dessert tartlets filled with chocolate and a creamy filling with decorations
- available flavors: raspberry, salted caramel, coconut, chocolate with freeze-dried mango
- placed on black tray
- covered with a black waffle paper
- box with full colour promotional print (CMYK)

Net / gross weight: 63/78 g
Tartlet size: 36x36x19 mm
Box size: 142x51x27 mm
Minimum order quantity: 50 pcs
Shelf life: 3 months



Chocolate Tartlets 04.27

- four handmade mini dessert tartlets filled with chocolate and a creamy filling with decorations
- available flavors: raspberry, salted caramel, coconut, chocolate with freeze-dried mango
- placed on black tray
- covered with a black waffle paper
- box with full colour promotional print (CMYK)

Net / gross weight: 84/101 g
Tartlet size: 36x36x19 mm
Box size: 95x95x27 mm
Minimum order quantity: 50 pcs
Shelf life: 3 months



Chocolate Tartlets Premium 04.28

- four handmade dessert tartlets filled with chocolate and a creamy filling with decorations
- available flavors: raspberry, salted caramel, coconut, chocolate with freeze-dried mango
- placed on black tray
- covered with a black waffle paper
- box with full colour promotional print (CMYK)

Net / gross weight: 142/172 g
Tartlet size: 55x55x17 mm
Box size: 138x137x27 mm
Minimum order quantity: 50 pcs
Shelf life: 3 months



Belgian Envelope with 8 Chocolates 04.25

- 8 original Belgian chocolates
- available chocolate types: milk in gold foil, milk in silver foil, dessert (dark) in gold foil
- wrapped in paper labels with full colour print – CMYK
- cardboard box with full colour promotional print – CMYK

Net / gross weight: 36/48 g
Chocolate size: 35x35x4 mm
Box size: 145x73x6 mm
Minimum order quantity: 50 pcs
Shelf life: 6 months

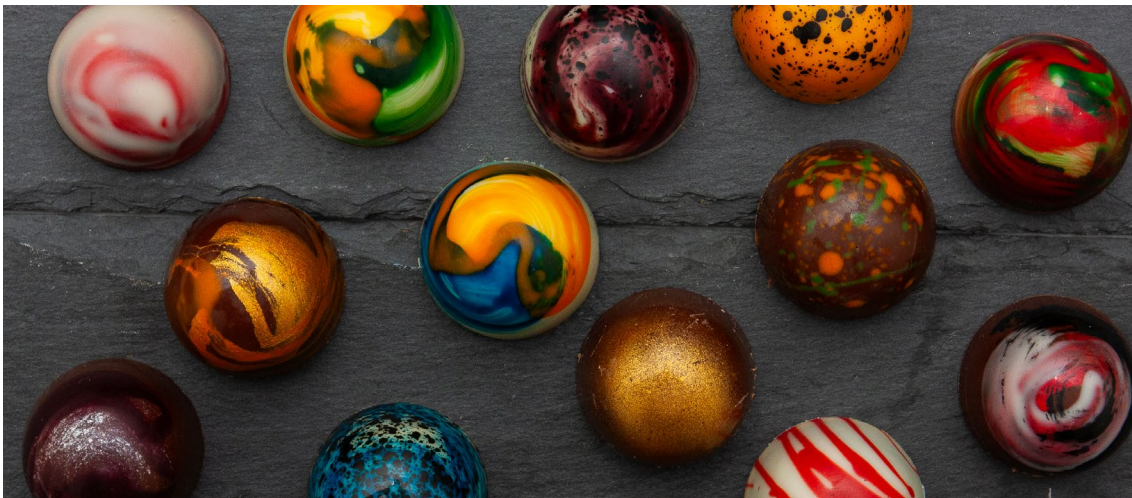


4 Pralines Chocolate Box 07.27



- 4 hand-made and decorated pralines with fillings in various flavors
- 2 selected praline flavors and decorations in standard
- pralines packed in black or white curlpapers
- cardboard box with a sliding sleeve with window
- standard branding: gold or silver metallized cardboard without branding with cardboard tag with full colour promotional print (CMYK) on one side
- box with full colour promotional print – CMYK (available after inquiry)
- box tied with decorative bow in many colours (full list available after inquiry)

<i>Net / gross weight:</i>	<i>ca. 50/77 g</i>
<i>Box size:</i>	<i>140x53x42 mm</i>
<i>Tag size:</i>	<i>55x40 mm</i>
<i>Minimum order quantity:</i>	<i>50 pcs</i>
<i>Shelf life:</i>	<i>4 months</i>



6 Pralines Chocolate Box 07.30

- 6 hand-made and decorated pralines with fillings in various flavors
- 3 selected praline flavors and decorations in standard
- pralines packed in black or white curlpapers
- two-piece cardboard box with window
- standard branding: gold or silver metallized cardboard without branding with cardboard tag with full colour promotional print (CMYK) on one side
- box with full colour promotional print – CMYK (available after inquiry)
- box tied with decorative bow in many colours (full list available after inquiry)

Net / gross weight:	ca. 75/120 g
Box size:	137x12x42 mm
Tag size:	59x56 mm
Minimum order quantity:	50 pcs
Shelf life:	4 months





Card with 4 Belgian Chocolates 04.07

- 4 high-quality Belgian chocolates
- available chocolate types: milk chocolate in gold or silver laminate, dark chocolate in gold laminate
- chocolates wrapped in labels with promotional print – CMYK
- cardboard box with flap with promotional print – CMYK
- chocolates placed in a transparent blister tray
- 4 die-cut windows on the back of the packaging for removing chocolates

<i>Net / gross weight:</i>	18/34 g
<i>Chocolate size:</i>	35x35x4 mm
<i>Box size:</i>	106x106x6 mm
<i>Minimum order quantity:</i>	50 pcs
<i>Shelf life:</i>	6 months



Card with 6 Belgian Chocolates 04.22

- 6 high-quality Belgian chocolates
- available chocolate types: milk chocolate in gold or silver laminate, dark chocolate in gold laminate
- chocolates wrapped in labels with promotional print – CMYK
- cardboard box with flap with promotional print – CMYK
- chocolates placed in a transparent blister tray
- 6 die-cut windows on the back of the packaging for removing chocolates

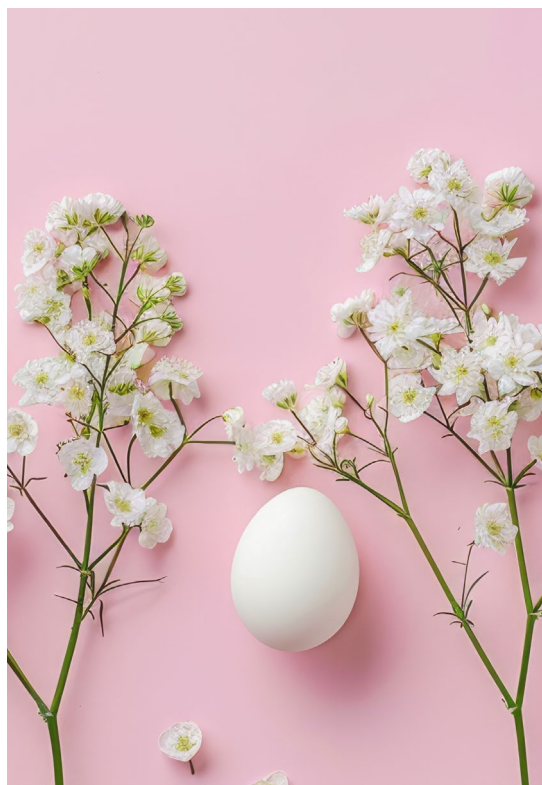
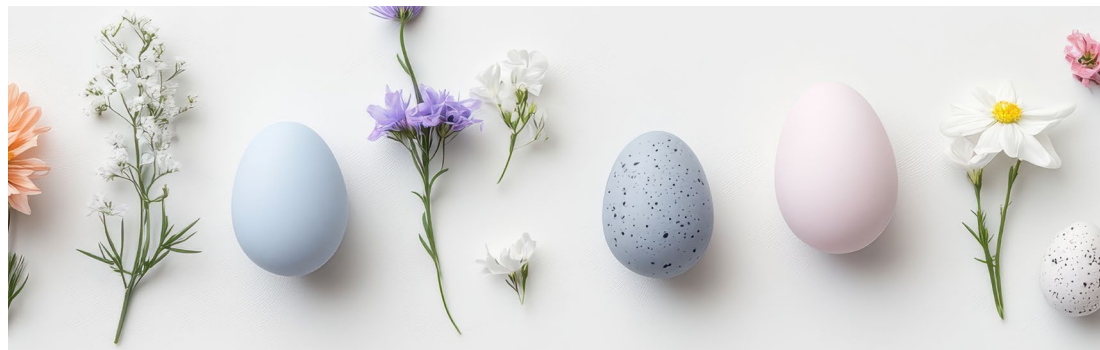
Net / gross weight: 27/50 g

Chocolate size: 35x35x4 mm

Box size: 148x113x6 mm

Minimum order quantity: 50 pcs

Shelf life: 6 months





Tasty Square 06.23

Excellent square Belgian chocolates with bits of freeze-dried fruits and sprinkles

- available chocolate types: milk chocolate 44% cocoa with freeze-dried mango or raspberries; milk chocolate 44% cocoa with chocolate flavoured crisps (mix of chocolate types); white chocolate with freeze-dried cherry or raspberries
- packed directly in clear foil bag
- long sticker with full colour promotional print – CMYK

Net / gross weight: 75/76 g

Chocolate size: 84x84x13 mm

Minimum order quantity: 100 pcs

Shelf life: 3 months



Almond Envelope 15.17

- almonds covered with delicious chocolate in colourful, spring version referring to Easter eggs
- white chocolate with addition of colouring – mix of colours
- packed in transparent bag
- other types of almonds in chocolate available after inquiry
- cardboard box in the shape of envelope made of unprinted black or kraft cardboard (in standard); box with full colour digital print (CMYK) available for extra charge
- paper wrapper with digital print (CMYK)

Net / gross weight: 35/45 g

Wrapper size: 210x45 mm

Box size: 95x96x19 mm

Minimum order quantity: 50 pcs

Shelf life: 6 months





Easter Set Premium 20.35

Elegant set consisting of large chocolate bar and 4 chocolate eggs made of milk (44% cocoa) and white chocolate decorated with freeze-dried fruits, sprinkles and coloured chocolate

- available variants: 1. milk chocolate 44% cocoa with freeze-dried strawberry and mango, eggs decorated with white and orange coloured chocolate; 2. milk chocolate 44% cocoa with sugar sprinkle, eggs decorated with white and milk chocolate with addition of colourful sprinkle
- placed on black, gold or silver tray
- cardboard box available in three versions:
 - white cardboard with full colour print (CMYK)
 - gold or silver metallized cardboard with embossed (inwards or outwards) logos and motifs
 - matte cardboard (black, etc.) with logos printed by gold or silver hot-stamping
- transparent lid made of PET foil
- box tied with satin ribbon available in many colours

Net / gross weight: 110/158 g

Box size: 184x184x18 mm

Minimum order quantity: 50 pcs

Shelf life: 3 months



Easter Message 20.12

Cute, mini set containing 4 small chocolates in the shape of bunnies

- available chocolate types: milk 44% (in standard); dessert 55%, dark and white after inquiry
- chocolates placed on transparent tray and packed in transparent foil flow pack
- packed in an intriguing box referring to the envelope
- box with full colour promotional print – CMYK

Net / gross weight: 28/43 g

Box size: 161x61x16 mm

Shelf life: 6 months

Minimum order quantity: 50 pcs





Milanowek Fudges

Traditional Polish Fudges (Krówki), hand-wrapped in promotional labels.

- traditional recipes
- available flavours: milk (from 5 kg), flavoured (from 40 kg or multiplied quantities)
- paper labels with full-colour CMYK or 1-4 Pantone promotional print
- available with 1c print on the inside of the label (after inquiry)

<i>Weight:</i>	12,5 g
<i>Pcs. in 1 kg:</i>	76-80 pcs
<i>Candy size:</i>	35x21x12 mm
<i>Label dimensions:</i>	68x73 mm
<i>Minimum order quantity:</i>	5 kg
<i>Shelf life:</i>	4 months



MILK



SALTED CARAMEL



CHOCOLATE



SESAME



COFFEE



GINGERBREAD



STRAWBERRY



COCONUT



PUFFED RICE



BUTTER

Basket with Eggs 20.19

6 milk chocolate eggs (empty inside) wrapped in foil with folk pattern

- sticker with product and manufacturer info (in Polish) placed on every egg
- placed on hay in small wooden basket
- set packed in transparent foil bag tied with gold string
- tag with full colour promotional print (CMYK) on one side, ingredients sticker placed on the back of the tag

Net / gross weight:	63/90 g
Dimensions:	90x60x120 mm
Tag size:	66x38 mm
Egg size:	25x30x55 mm
Shelf life:	12 months
Minimum order quantity:	50 pcs





Easter Egg with Chocolates 20.73

Easter-egg shaped baking form filled with delicious Belgian pralines

- paper baking form can be used for baking a cake after the pralines are eaten
- 7 hand made milk (44% cocoa) or white chocolates with mix of freeze-dried fruits dipped inside
- packed in transparent foil bag and tied with raffia in several available colours
- tag with full colour promotional print (CMYK) on one side, ingredients sticker placed on the back of the tag

<i>Net / gross weight:</i>	<i>73/88 g</i>
<i>Chocolates per box:</i>	<i>7 pcs</i>
<i>Box size:</i>	<i>130x90x32 mm</i>
<i>Tag size:</i>	<i>66x38 mm</i>
<i>Minimum order quantity:</i>	<i>50 pcs</i>
<i>Shelf life:</i>	<i>3 months</i>



Easter Greetings 20.51

Seasonal greetings made of squares with letters and Easter motifs, made of Belgian chocolate.

- three types of chocolate per set: milk 44% cocoa (letters), white chocolate (Easter egg), white chocolate with pink colouring (bunny)
- placed on black, gold or silver tray
- full colour promotional print on box – CMYK

Net / gross weight: 90/145 g

Chocolates per box: 20 pcs

Box size: 315x121x20 mm

Minimum order quantity: 50 pcs

Shelf life: 6 months



Eared Set 20.52

Cute box with bunny ears containing 7 chocolate eggs

- chocolates packed in retail foil wrappings with Easter motifs
- delicious milk chocolates with crunchy crisp inside
- chocolates available only in mix of flavours: vanilla, orange, chocolate, strawberry
- box with full colour print (CMYK)
- box closed with a satin bow in one of several available colours

Net / gross weight: 79/87 g

Box size: ca. 173x63x63 mm

Minimum order: 50 pcs

Shelf life: 6 months

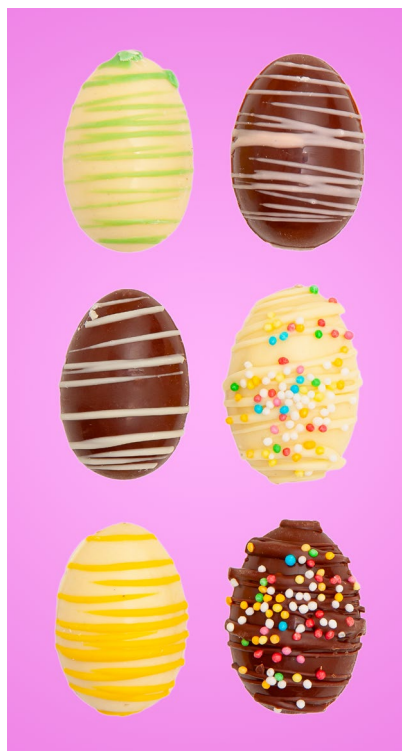


Easter Set 4 20.74

Cute Easter themed gift containing 4 small egg shaped chocolates with decorations

- eggs made of milk chocolate 44% cocoa and white chocolate
- chocolates flat at the bottom
- chocolates placed on black, gold or silver resting tray
- packed in transparent foil bag tied with decorative ribbon in several available colours
- cardboard tag with promotional print – CMYK on one side, ingredients sticker placed on the back of the tag

<i>Net / gross weight:</i>	32/40 g
<i>Chocolate size:</i>	40x28 mm
<i>Chocolates per box:</i>	4 pcs
<i>Dimensions:</i>	260x74x12 mm
<i>Tag size:</i>	59x56 mm
<i>Minimum order quantity:</i>	50 pcs
<i>Shelf life:</i>	6 months





Easter Set 9 20.76

Cute Easter set containing 9 small egg shaped chocolates with decorations

- eggs made of milk chocolate 44% cocoa and white chocolate
- chocolates flat at the bottom
- chocolates placed on black, gold or silver resting tray
- box with full colour promotional print (CMYK)

<i>Net / gross weight:</i>	<i>72/110 g</i>
<i>Chocolate size:</i>	<i>40x28 mm</i>
<i>Chocolates per box:</i>	<i>9 pcs</i>
<i>Dimensions:</i>	<i>142x160x20 mm</i>
<i>Minimum order quantity:</i>	<i>50 pcs</i>
<i>Shelf life:</i>	<i>6 months</i>



Fudge in Chocolate Premium Set 04.10 A

15 chewy, milk fudges covered in delicious, Belgian chocolate with addition of various sprinkles

- 2 possible decoration variants:
 - 1) 3 pcs of fudges in milk chocolate 44% cocoa; 3 pcs of fudges in white chocolate decorated with milk chocolate 44% cocoa; 3 pcs of fudges in milk chocolate 44% cocoa with coconut flakes, 3 pcs of fudges in milk chocolate 44% cocoa with sesame, 3 pcs of fudges in dark chocolate decorated with white chocolate
 - 2) 3 pcs of fudges in milk chocolate 44% cocoa; 3 pcs of fudges in white chocolate decorated with milk chocolate 44% cocoa; 3 pcs of fudges in milk chocolate 44% cocoa with coconut flakes, 3 pcs of fudges in milk chocolate 44% cocoa with sesame, 3 pcs of fudges in dark chocolate decorated with freeze-dried strawberry
- placed on black tray
- box with full colour promotional print (CMYK)
- also available in boxes made of: black matte cardboard with gold or silver hot-stamping; gold or silver metallized cardboard with embossment

Net / gross weight: ca. 228/265 g
Chocolates per box: 15 pcs
Box size: 142x160x20 mm
Minimum order quantity: 50 pcs
Shelf life: 3 months





Carrot Field 20.15

5 delicious chocolate carrots made of orange flavoured chocolate with “parsley” coloured in green

- placed on transparent tray and packed in transparent foil
- packed in cardboard box with promotional print (CMYK)

Net / gross weight: 18/27 g

Box size: 140x60x14 mm

Minimum order quantity: 100 pcs

Shelf life: 6 months



5 Easter Eggs Set 20.42

Set of 5 chocolate Easter eggs

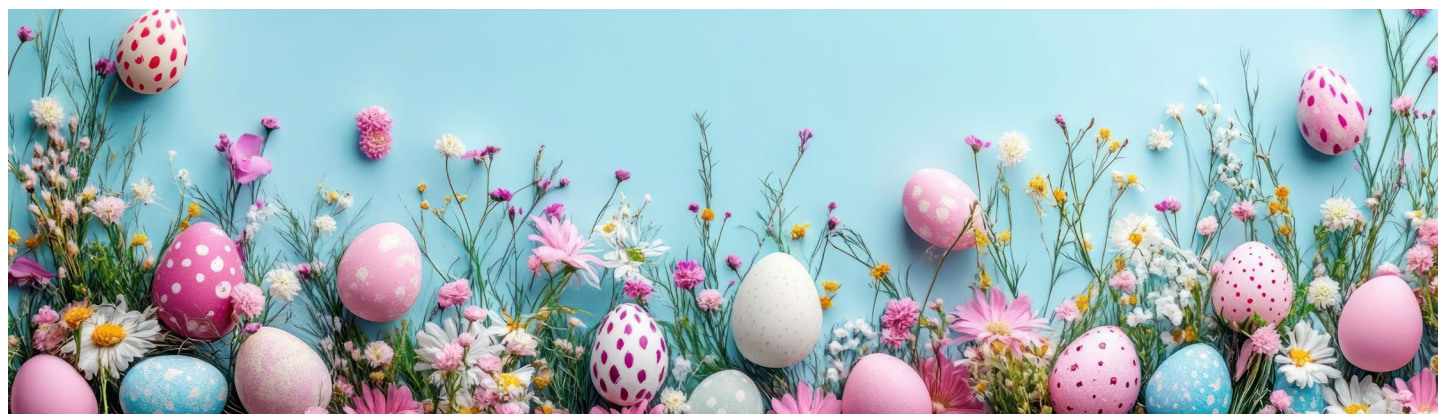
- eggs made of milk chocolate 44% cocoa, other chocolate types: milk 33%, dessert 55% or white chocolate available after inquiry
- cardboard box with flap and see through window which makes one egg visible from the outside
- full colour promotional print on the box – CMYK

Net / gross weight: 55/90 g

Box size: 205x88x24 mm

Shelf life: 6 months

Minimum order: 100 pcs



Easter Bunny 20.08

Chocolate Easter Bunny with freeze-dried fruits and nuts

- available types: milk chocolate 44% cocoa with freeze-dried strawberry, milk chocolate 44% cocoa with freeze-dried fig, white chocolate with freeze-dried cranberry and pistachios
- cardboard tag (55x40 mm) with promotional print on one side
- bunny packed in transparent foil bag
- bag tied with decorative ribbon in one of several available colours

Net / gross weight: 60/64 g

Dimensions: 100x75x17 mm

Minimum order quantity: 50 pcs

Shelf life: 3 months



Chocolate Hen 20.78

Cute hen made of high quality Belgian chocolate

- available types: milk chocolate 44% cocoa, white chocolate
- packed in transparent foil bag and tied with natural raffia
- tag with full colour promotional print (CMYK) on one side, ingredients sticker placed on the back of the tag

Net / gross weight:	40/45 g
Dimensions:	100x150x10 mm
Chocolate size:	70x50x10 mm
Tag size:	50x30 mm
Minimum order quantity:	50 pcs
Shelf life:	6 months



Flowers Message 04.58

Cute, mini set containing 3 small chocolates in the shape of flowers

- available chocolate types: milk 44% (in standard); dessert 55%, dark and white after inquiry
- chocolates placed on transparent tray and packed in transparent foil flow pack
- packed in an intriguing box referring to the envelope
- box with full colour promotional print – CMYK

Net / gross weight: 30/45 g

Box size: 161x61x16 mm

Minimum order quantity: 100 pcs

Shelf life: 6 months



Easter Gift 20.45

Easter bunny or sheep made of delicious Belgian chocolate

- available chocolate types: milk 44% cocoa, white
- chocolate packed in transparent polybag
- cardboard header card with full colour promotional print (CMYK)

Net / gross weight: 15/17 g

Header card size: 55x41 mm

Minimum order: 100 pcs

Shelf life: 6 months



Chocolate Egg with Ribbon 20.24

Delicious Belgian chocolate in Easter egg shape

- available types: milk chocolate 44% cocoa, white chocolate
- also available with freeze-dried fruit decoration
- placed on black, gold or silver tray
- packed in two-piece cardboard box with full colour print and die-cut window
- box tied with stylish, satin ribbon (several colours available)
- also available in box made of metallized cardboard (gold, silver) with embossed logos, signs etc.

Net / gross weight: 25/50 g

Chocolate size: 57x42x16 mm

Box size: 102x102x20 mm

Minimum order quantity: 50 pcs

Shelf life: 6 months



Mini Flower Pot 20.54

Small ceramic flower pot with chocolate egg and cress seeds to plant at home

- each pot contains: 1 filled chocolate egg in mix of flavours and foil colours (11g), bag with 6g of cress seeds and cottonwool
- cardboard tag with promotional print (CMYK) on both sides

Net / gross weight: 17/52 g

Dimensions: flower pot: 22x47x40 mm

Tag size: 50x50x65 mm

Minimum order quantity: 50 pcs

Shelf life: 6 months



Tea Icicle 16.08

Aromatic tea available in several flavours

- possible variants: winter, jasmine, currant, rose, spring
- tea packed in icicle shaped foil bag
- greeting card with digital (CMYK) print on one side
- tied with satin ribbon in several possible colours

Net / gross weight: ca. 40/44 g

Tag size: 55x40 mm

Minimum order quantity: 100 pcs

Shelf life: 12 months

Dimensions: ca. 300x55 mm



WINTER



JASMINE



CURRANT



ROSE



SPRING



Oat Cookie – Rabbit 20.46

Crispy oat cookie with sesame packed in polybag

- cardboard insert cards in the shape of a rabbit with promotional print- CMYK
- bag tied with a bow (many different colours available)

Net / gross weight: 11 /15 g
Insert size: 66x127x8 mm
Minimum order: 100 pcs
Shelf life: 6 months





Choco Carrot 20.02

Small carrot made of milk (44% cocoa) or white chocolate with colouring that makes it resemble natural carrot

- packed in transparent polybag
- cardboard header card with full colour promotional print (CMYK)

Net / gross weight: 25/26 g

Chocolate size: 33x94x12 mm

Tag size: 55x41 mm

Minimum order quantity: 100 pcs

Shelf life: 6 months



Golden Egg 20.16

Natural sized egg made of high quality, milk Belgian chocolate – 44% cocoa decorated with gold colouring

- packed in transparent plastic blister
- cardboard box with full colour promotional print – CMYK
- instead of decoration, egg can be wrapped in gold metallized foil (after inquiry)

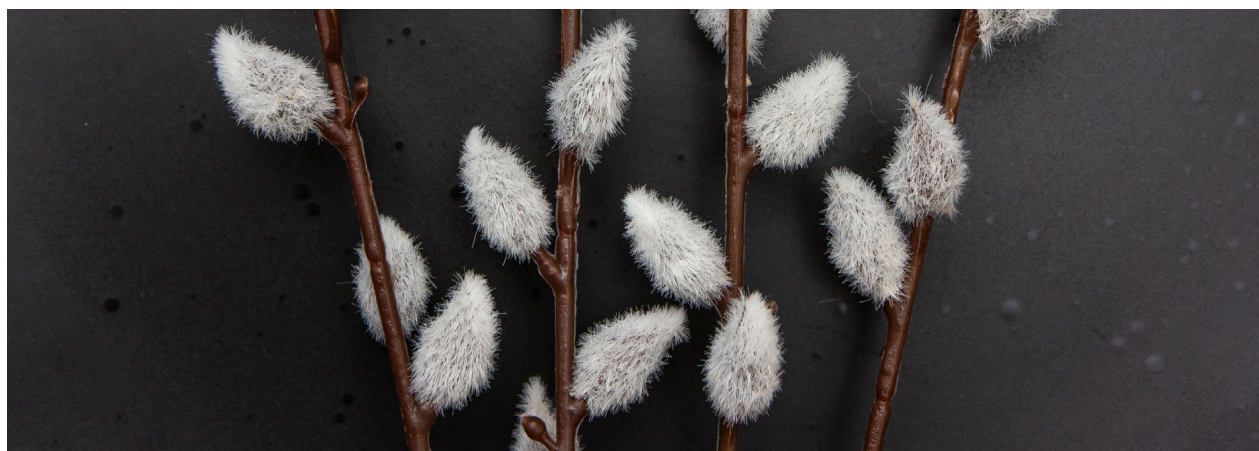
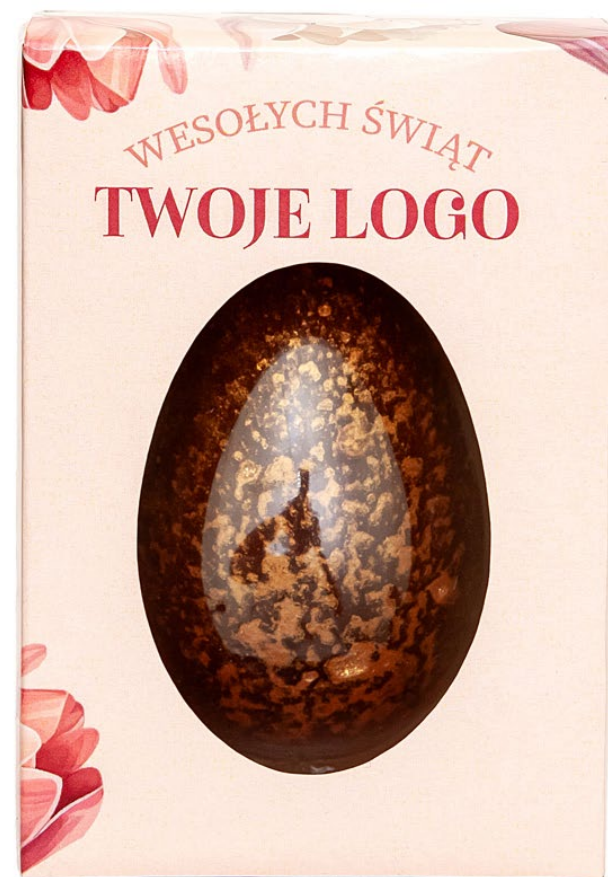
Net / gross weight: 30/59 g

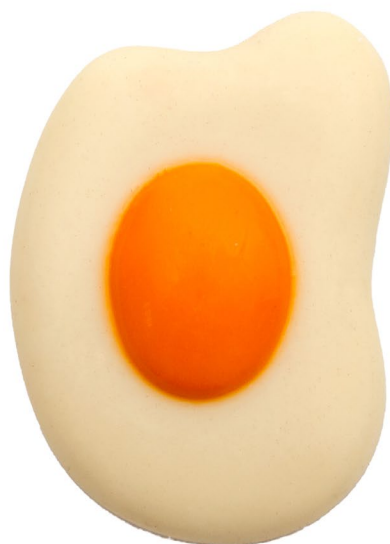
Egg size: 67x47x40 mm

Box size: 73x51x103 mm

Minimum order quantity: 50 pcs

Shelf life: 6 months





Chocolate Fried Egg Mini 20.41

Small fried eggs created using white and orange flavoured Belgian chocolate

- other chocolate types and flavour available after inquiry
- chocolate packed in transparent polybag
- cardboard header card with full colour promotional print (CMYK)

Net / gross weight: 22/25 g

Header card size: 55×41 mm

Minimum order: 100 pcs

Shelf life: 6 months



A top-down view of several decorated Easter eggs and fresh flowers on a white, textured surface. The eggs are in various colors: white with pink and red speckles, yellow with orange speckles, orange with red speckles, light blue with multi-colored speckles, and pink with red speckles. Some eggs are nestled in a small nest made of dried twigs. The flowers include white daisies with yellow centers and small yellow flowers on green stems. The overall scene is bright and festive.

FIND OUT MORE ON
OUR WEBSITE

www.promotionalsweets.pl/easter